

SAE系列注塑机

专注美好未来

IOG<sup>®</sup> 朗格塑机  
LOG MACHINE

高效节能伺服注塑机  
High efficiency and energy saving servo injection molding machine



IOG<sup>®</sup> 朗格塑机  
LOG MACHINE

宁波创基机械股份有限公司  
NINGBO CHUANGJI MACHINERY CO.,LTD.

地址：浙江省余姚市泗门镇工业区姚北大道泗门段18号  
邮编：315400  
电话：+86-13505782746  
+86-574-62523826  
传真：+86-574-62523826  
服务电话：400 826 0110

www.logge.com.cn  
E-mail：nbcj@logge.com.cn

FOR INTERNATIONAL BUSINESS

ADD：Simen Industrial Area , yuyao , zhejiang Province , China  
P.C：315400  
TEL：+86-18395810513  
+86-574-62523811  
FAX：+86-574-62523806  
SERVICE：400 826 0110

www.log-machine.com  
E-mail：loginmachine@logge.com.cn



扫一扫 更多产品介绍  
SCAN TO UNLOCK MORE PRODUCTS

LOG-SAE-A01

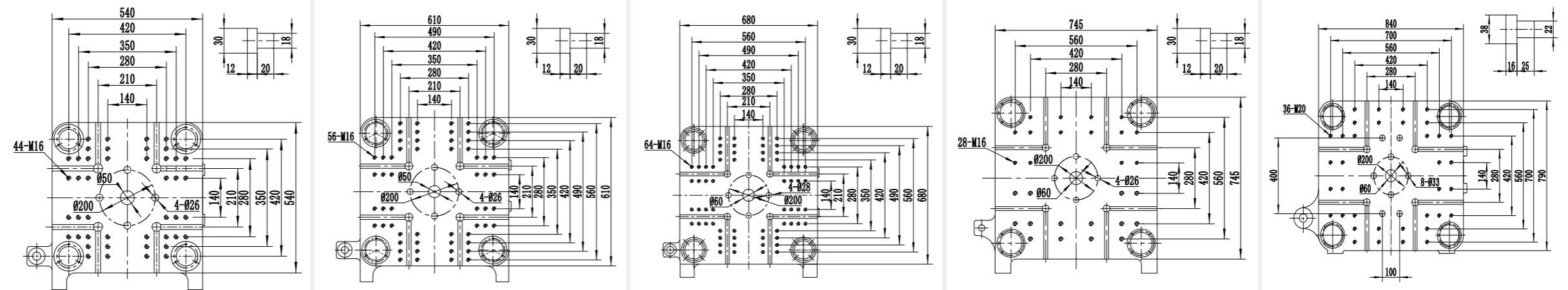
# 技术参数

## TECHNICAL SPECIFICATIONS

DESCRIPTION INTERNATIONAL RECOGNIZED MODELS	单位 UNIT	LOG-90SAE			LOG-130SAE			LOG-160SAE			LOG-210SAE			LOG-250SAE		
		A	B	C	A	B	C	A	B	C	A	B	C	A	B	C
<b>射胶系统</b> INJECTION UNIT		275/90			416/130			525/160			830/210			1140/250		
理论容积 INJECTION VOLUME	cm <sup>3</sup>	113	154	181	215	263	302	277	318	392	381	470	569	510	617	687
理论重量 (PS) SHOT WEIGHT(PS)	g	106	144	170	196	239	274	260	298	368	347	429	520	464	561	625
螺杆直径 SCREW DIAMETER	mm	30	35	38	38	42	45	42	45	50	45	50	55	50	55	58
长径比 SCREW L:D RATIO		23	20	18	22	20	18	21.4	20	18	22	20	18	24	22	21
注射压力 INJECTION PRESSURE	Mpa	252	185	157	193	158	138	190	166	135	217	176	145	224	185	166
注射速率 INJECTION RATE	g/s	70	96	112	118	144	166	151	173	215	160	196	238	164	198	221
注射速度 INJECTION SPEED	mm/s		110			115			120			110			92	
螺杆行程 SCREW STROKE	mm		160			190			200			240			260	
螺杆转速 SCREW SPEED	r/min		220			220			220			200			150	
<b>锁模系统</b> CLAMPING UNIT																
锁模力 CLAMPING FORCE	KN		900			1300			1600			2100			2500	
开模行程 OPENING STROKE	mm		320			380			430			480			520	
模板尺寸 PLATEN SIZE	mm		540x540			610x610			680x680			745x745			840x790	
连接柱内距 SPACE BETWEEN TIE BARS	mm		360x360			410x410			460x460			510x510			580x530	
容模量 MOLD THICKNESS	mm		150-360			150-430			180-500			200-550			200-580	
模板最大行程 PLATEN MAX STROKE	mm		680			810			930			1030			1100	
油压顶出行程 EJECTOR STROKE	mm		100			120			140			150			150	
油压顶出力 EJECTOR FORCE	KN		31			42			50			67			67	
<b>动力/电热</b> POWER/ELECTRIC HEATING																
油压系统压力 HYDRAULIC SYSTEM PRESSURE	Mpa		17.5			17.5			17.5			17.5			17.5	
伺服电机 SERVO MOTOR	KW		15			18.7			23			27.8			27.8	
电热量 HEATING POWER	KW		7.52			8.48			13.44			14.5			18.4	
加热控制区数 HEATING ZONES			3+射嘴			4+射嘴			4+射嘴			4+射嘴			4+射嘴	
<b>其他</b> OTHER																
油箱容积 OIL TANK CAPACITY	L		160			200			210			310			350	
外形尺寸 MACHINE DIMENSION	m*m*m		4.2*1.1*1.89			4.58*1.15*1.95			4.83*1.25*2.02			5.4*1.35*2.05			6.13*1.41*2.15	

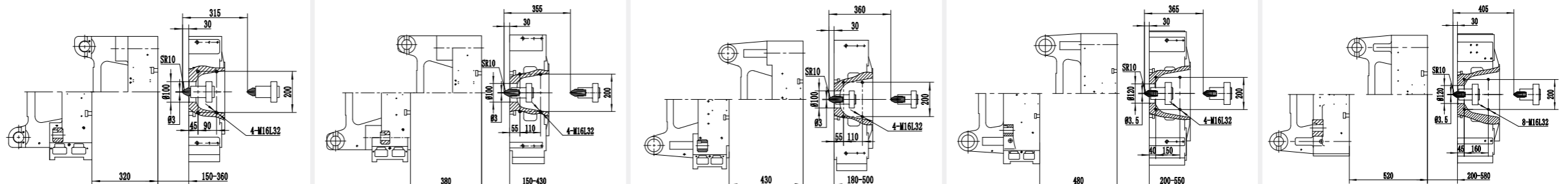
### 模板正面尺寸 Platen dimensions

Moving platen



### 模板侧面尺寸 Platen dimensions

Mounting hole for robot/sprue picker top view from fixed platen





# 机器尺寸

Machine dimension parameters

型号 MODEL	A	B	C	D	E	F
LOG-90SAE	3965	1500	3410	240	1020	1890
LOG-130SAE	4335	1590	3780	250	1100	1950
LOG-160SAE	4575	1720	3975	250	1180	2024
LOG-210SAE	5130	1780	4535	270	1340	2050
LOG-250SAE	5780	1820	5050	350	1400	2140
LOG-320SAE	6080	1870	5300	240	1556	2240
LOG-350SAE	6705	1950	5750	240	1600	2210
LOG-450SAE	7700	1860	6700	240	1750	2250
LOG-500SAE	8200	2070	7070	350	1820	2390

最终解释权归宁波创基机械所有

# 示意图

Sketch Map

