

专注美好未来

LOG<sup>®</sup> 朗格塑机  
LOG MACHINE

高速包装注塑机  
2700—4500kN  
High Speed Packaging Injection Molding Machine



LOG-F-A1

LOG<sup>®</sup> 朗格塑机  
LOG MACHINE

宁波创基机械股份有限公司  
NINGBO CHUANGJI MACHINERY CO.,LTD.

地址：浙江省余姚市泗门镇工业区姚北大道泗门段18号  
邮编：315400  
电话：+86-13505782746  
+86-574-62523826  
+86-574-62523826  
传真：+86-574-62523826  
服务电话：400 826 0110

www.logge.com.cn  
E-mail : nbcj@logge.com.cn

FOR INTERNATIONAL BUSINESS

ADD : Simen Industrial Area , yuyao , zhejiang Province , China  
P.C : 315400  
TEL : +86-18395810513  
+86-574-62523811  
FAX : +86-574-62523806  
SERVICE : 400 826 0110

www.log-machine.com  
E-mail : loginjmachine@logge.com.cn



扫一扫 更多产品介绍  
SCAN TO UNLOCK MORE PRODUCTS

# 薄壁包装系列

Thin Walled Packaging Series

## F系列适用

民品包装、物流包装、药品包装、食品包装等行业。

Suitable For  
Civil Product Packaging, Logistics Packaging,  
Pharmaceutical Packaging, Food Packaging, Etc.



# 行业优势

Industry Advantages

如今制造业对高精度注塑机的需求持续增长, 环保、节能要求也不断提高, 朗格旗下F系列高速薄壁专用机经过长时间研发及改进, 二十年来兢兢业业, 厚积薄发的技术沉淀让我司高速机更加契合客户实际需求。

After more than 20 years of development and improvement, LOG's F series high-speed thin-wall special machines are more in line with the actual requirements of customers.



## F系列优势

Series Advantages



最大注射速度500mm/s  
Max Injection Speed



超高注射速率  
Max Injection Volume



超快响应能力  
Fast Response



最专用薄壁料管组件  
Specialized Thin Wall Parts



压中心模板结构  
Pressure Center Template Structure



注射油缸双出杆结构  
Double Injection Cylinder

朗格高速机针对薄壁包装广泛应用于各个领域

# 餐盒 刀叉 针筒 酸奶杯 冰激凌盒等

F系列高速机采用高响应伺服系统, 能耗低, 稳定性高。

Suitable For All Thin Wall Products  
Such As Food Container, Folks, Syringe, ice Cream Box

The F Series High-speed Machine Adopts A High-response Servo System With Low Energy Consumption And High Stability

### 高速开合模

强劲动力输出,开合模速度快,缩短制品生产周期

**High-speed mold opening and closing**  
Strong power output, fast mold opening and closing speed, shortening product cycle

### 精准的锁模单元

标配智能开合模程序,开模位置精度提升,有利于机械手取件等自动化生产

**Precise clamping unit**  
Intelligent mold opening and closing program, the accuracy of mold opening position is improved, which is beneficial to automatic production such as robot pick-up

### 特殊工艺定制拉杆

拉杆螺纹特殊工艺处理,消除加工螺纹表面疲劳裂纹源,大幅提高拉杆疲劳寿命

**High Quality Tie Bar**  
Special Processing Of Tie Bar Threads Greatly Improves Tie Bar Life

### 可靠的液压管路

扩口法兰式管路,整机管路无焊接,杜绝因焊接而产生高压漏油的风险

**High Quality Hydraulic Pipes**  
Flared Flanged Pipeline, No Welding In The Pipeline Of The Whole Machine, No Risk Of Oil Leakage



### 可靠的调模机构

新型机构,调模间隙控制更均衡,开合模冲击减低,抗磨损性提升,后期维护方便

**High Quality Mold Adjustment Mechanism**  
The Mold Adjustment Gap Control Is More Balanced, The Impact Of Mold Opening And Closing Is Reduced, The Wear Resistance Is Improved, And Maintenance Is Convenient

### 压中心设计

使模具锁紧力指向模具中心部位,模板变形量减小,强度提高

**Pressure Center Design**  
Make The Mold Locking Force Point To The Center Of The Mold, The Deformation Of The Template Is Small, And The Strength Is Improved

### 控制系统

高精度电控装置更加稳定,高效

**High Quality Controller**  
High-precision Electronic Control Device, Stable And Efficient

### 高效的节能技术

采用红外高效节能加热装置,加热更快,更节能

**Efficient Energy Saving Technology**  
Infrared Heating Device, Heating Faster And More Energy-saving

### 快速响应能力

双缸平衡注射装置,低摩擦直线导轨支撑,保障最高射速度500 mm/S

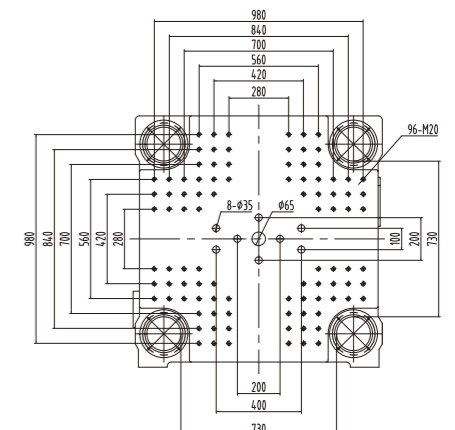
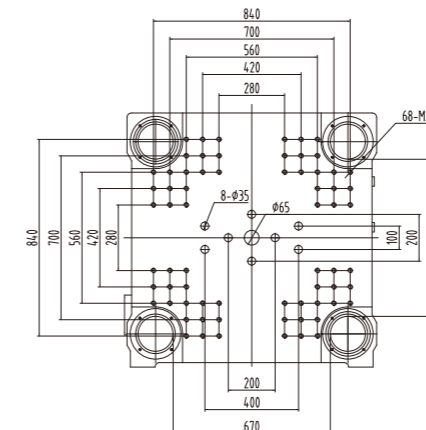
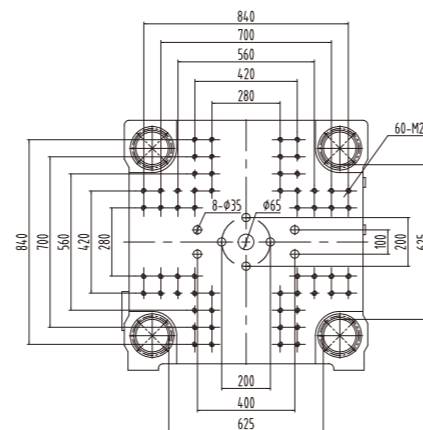
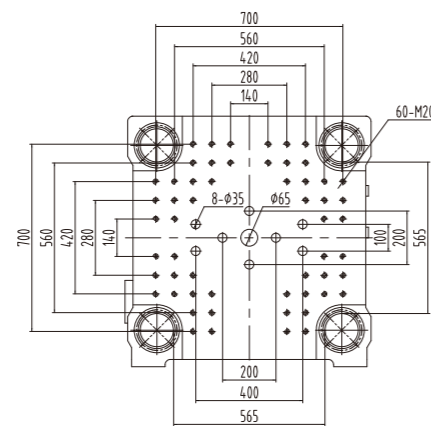
**High Response**  
Double-cylinder Injection Device, Low-friction Linear Guide, The Highest Injection Rate Is 500 Mm/s

# 技术参数

			LOG-270F	LOG-320F	LOG-380F	LOG-450F
国际公认号	DESCRIPTION	单位	1000/2700	1140/3200	1300/3800	1580/4500
<b>射胶系统</b>	<b>INJECTION UNIT</b>					
理论容积	INJECTION VOLUME	cm	548	663	760	904
理论重量 (PS)	SHOT WEIGHT(PS)	g	500	604	691	822
螺杆直径	SCREW DIAMETER	mm	50	55	55	60
长径比	SCREW L:D RATIO		25	25	25	25
注射压力	INJECTION PRESSURE	Mpa	170	172	172	175
注射速率	INJECTION RATE	Mpa	642	972	1080	1286
注射速度	INJECTION SPEED	mm/s	360	450	500	500
螺杆行程	SCREW STROKE	mm	280	280	320	320
螺杆转速	SCREW SPEED	r/min	300	300	300	300
<b>锁模系统</b>	<b>CLAMPING UNIT</b>					
锁模力	CLAMPING FORCE	KN	2700	3200	3800	4500
开模行程	OPENING STROKE	mm	590	640	680	730
模板尺寸	PLATEN SIZE	mm	910x910	1000x1000	1060x1060	1160x1160
连接柱内距	SPACE BETWEEN TIE BARS	mm	565x565	625x625	670x670	730x730
容模量	MOLD THICKNESS	mm	220-630	250-680	300-750	320-800
模板最大行程	PLATEN MAX STROKE	mm	1220	1320	1430	1530
油压顶出行程	EJECTOR STROKE	mm	150	150	160	160
油压顶出力	EJECTOR FORCE	KN	62	62	110	110
<b>动力/电热</b>	<b>POWER/ELECTRIC HEATING</b>					
油压系统压力	OIL PRESSURE SYSTEM PRESSURE	Mpa	19	19	19	19
伺服电机	SERVO MOTOR	KW	36+36	52+52	61+52	61+61
电热量	HEATING POWER	KW	24.2	26.8	29.8	31.6
加热控制区数	HEATING ZONES		5+射嘴	5+射嘴	5+射嘴	5+射嘴
<b>其他</b>	<b>OTHER</b>					
油箱容积	FUEL TANK CAPACITY	L	500	550	860	860
外形尺寸	MACHINE DIMENSION	m*m*m	7.3*1.75*2.3	7.6*1.8*2.3	8.2*2.0*2.3	8.4*2.0*2.3

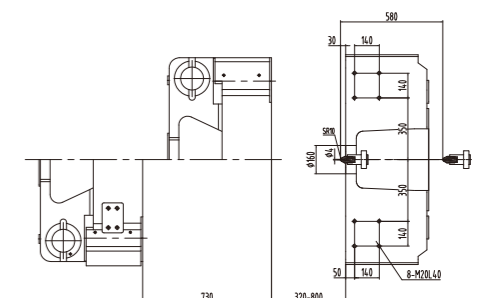
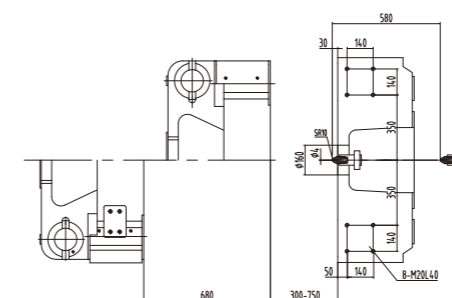
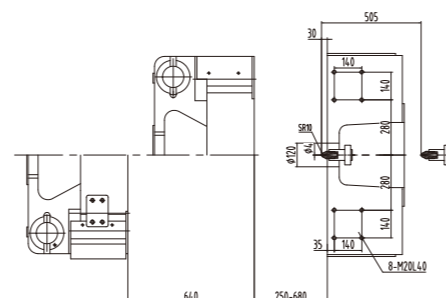
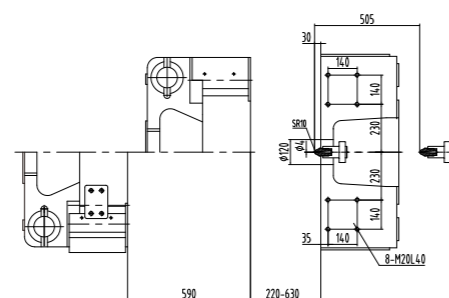
## 模板正面尺寸 Platen dimensions

Moving platen



## 模板侧面尺寸 Platen dimensions

Mounting hole for robot/sprue picker top view from fixed platen





# 机器尺寸

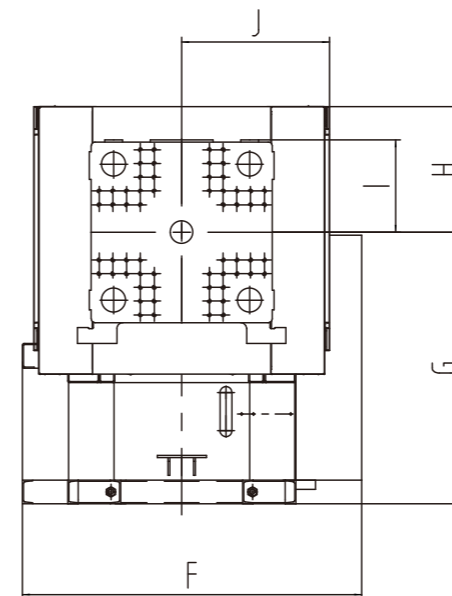
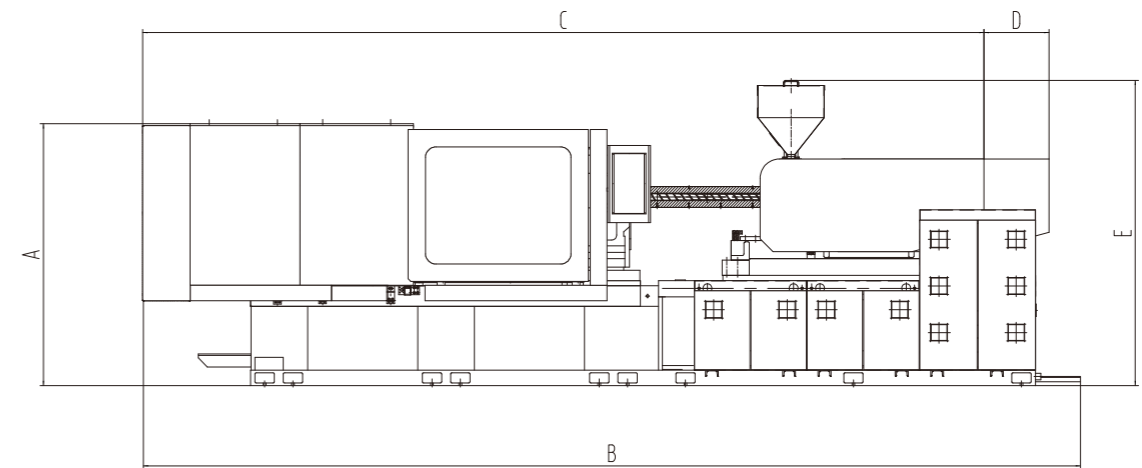
Machine dimension parameters

型号	A	B	C	D	E	F	G	H	I	J
LOG-270F	2050	7300	6550	505	2260	1750	1385	650	480	760
LOG-320F	2090	7560	6810	505	2260	1810	1385	700	520	800
LOG-380F	8200	7935	7170	582	2250	2000	1345	700	560	860
LOG-450F	8400	8060	7295	582	2250	2000	1345	700	600	910

最终解释权归宁波创基机械所有

# 示意图

Sketch Map



# 我们的服务

Our service

## 灵活快捷的售前支援

Flexible and fast pre-sale service

我们根据客户加工的产品种类以及所用原材料的不同，提出“量身定做”理念并实施，以合理的价格、较高的品质、交货周期短，来满足不同客户的特殊需求。

According to the different o customersproduct types and raw materials, we put forward the tailored conceptandimplement with reasonable high quali ty,short delivery cycleto meet the customers special needs.

## 体贴入微的售中服务

Considerate in- sale service

创基公司秉承“微笑第一，服务三问”的售中服务理念，深入公司部门各网点，使得用户在使用朗格塑机的同时感觉到快乐和自信，产品交易保持着“零误差”这种细致体贴的服务使朗格塑机在同行中保持着良好的口碑。

We adhere to the service concept“smile first &three questions”, and go deep into the branches of the company, so that users feel happy and confident when using LOG machines.and the product transaction maintains zero errorThis kind ofconsiderate service makes LOG machine maintain a Flexible and fast pre-sale service good reputation among the peers.

## 优秀完美的售后服务

Excellent and perfect after-sales service

创基公司利用自身良好而快捷的服务已覆盖全国的技术服务中心，对购买朗格塑机的客户进行及时、有效的售后服务，创基承诺对朗格塑机的质量无法确认责任归宿时，由创基公司承担相应责任。

We have technical service center for our customers. We offer efficient and timely after-service for thecustomers.

## 技术精湛的专业人员

Highly skilled technicians

创基人会以良好的服务赢得您的赞誉，会以热诚忘我的精神赢得您的感动，更会以精湛的技术赢得您对朗格塑机的信任。

We will win your praise v with good service, touch you by the spirit of dedication,and I win your trust with exquisite technology



**LOG** 朗格塑机  
LOG MACHINE

全国24小时服务热线  
24 HOURS SERVICE HOT LINE

**400 826 0110**